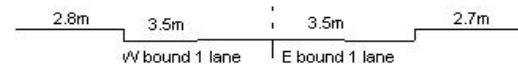
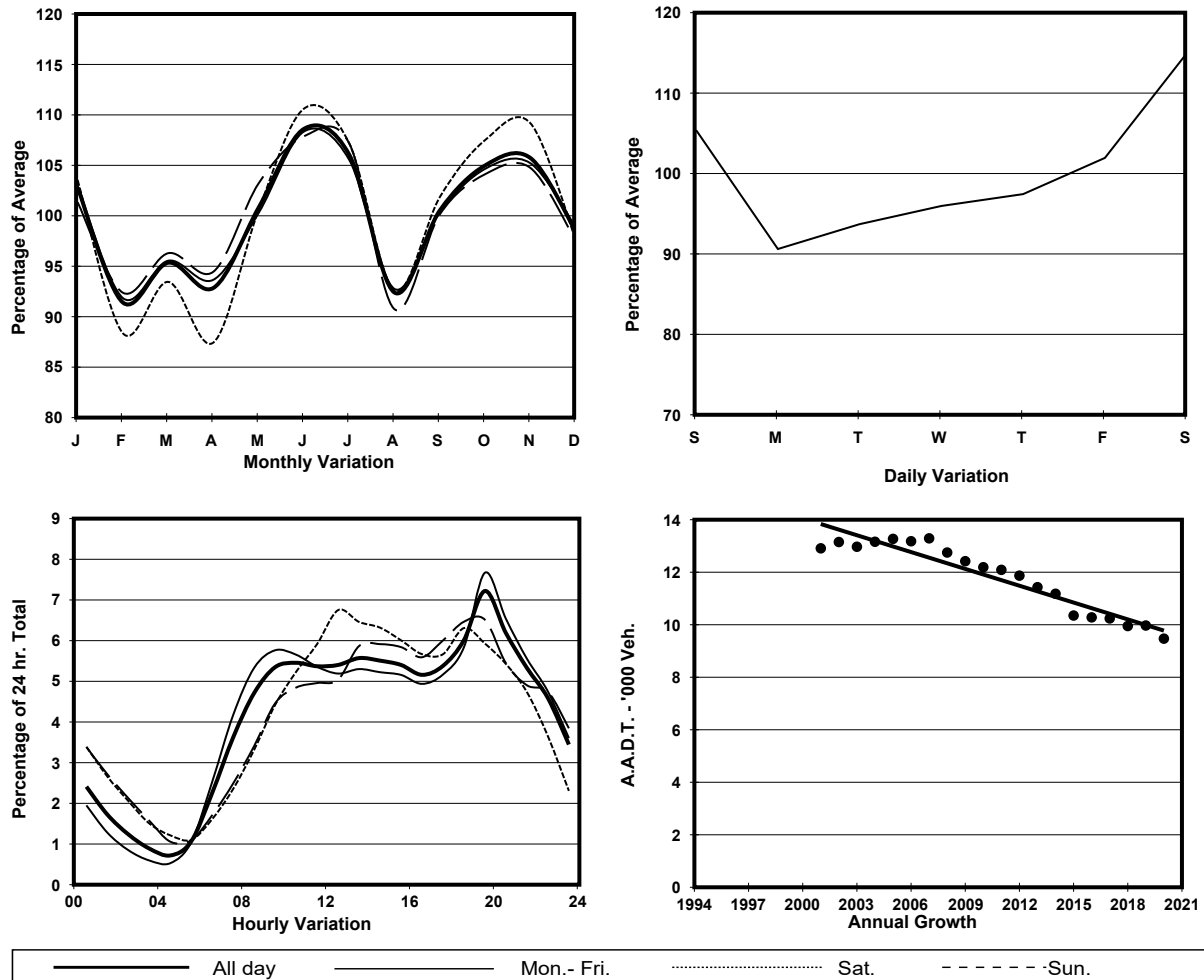


YEAR	2020	LINK	CAINE RD (from SEYMOUR RD to ABERDEEN ST)
CORE STATION	1013		
ROAD NETWORK	MAJOR		
ROAD TYPE	DISTRICT DISTRIBUTOR		



### 1. TRAFFIC FLOW VARIATION AND GROWTH



### 2. TRAFFIC CHARACTERISTICS (BY DIRECTION)

Parameter	All - Day	Mon. - Fri.	Sat.	Sun.
<b>EAST BOUND</b>				
A.A.D.T.	7180	7130	7870	6640
R 12 / 24 - %	66.8	68.3	62.6	64.1
R 16 / 24 - %	86.8	88.6	82.2	82.6
AM Peak Hour	0900-1000	0900-1000	0900-1000	0900-1000
One-way flow at AM peak hour	430	460	420	290
T - % (AM)	-	-	-	-
PM Peak Hour	1800-1900	1800-1900	1800-1900	1800-1900
One-way flow at PM peak hour	450	450	470	410
T - % (PM)	-	-	-	-
Prop.of commercial vehicles - 16 hr.	-	-	-	-
<b>WEST BOUND</b>				
A.A.D.T.	2290	1940	3010	3310
R 12 / 24 - %	50.7	44	56.4	65
R 16 / 24 - %	84.5	83.9	83.2	87.3
AM Peak Hour	0700-0800	0700-0800	0900-1000	0900-1000
One-way flow at AM peak hour	80	80	60	150
T - % (AM)	-	-	-	-
PM Peak Hour	1800-1900	1800-1900	1800-1900	1800-1900
One-way flow at PM peak hour	120	80	230	220
T - % (PM)	-	-	-	-
Prop.of commercial vehicles - 16 hr.	-	-	-	-

### 3. OTHER INFORMATION AND COMMENT